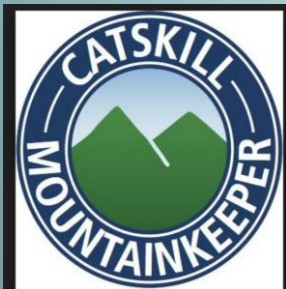


# Creating a County-Wide Trails Committee: Lessons from Ulster County



**Kathleen Nolan, MD, MSL**  
**Senior Research Director**

# Fertile Soil

- **Popular, visible multipurpose trails**
- **Efforts to build more trails**
- **Planning studies**
  - **Comprehensive Plan**
  - **Long-range Transportation Plan**
  - **Non-motorized Transportation Plan**
  - **Economic Impact Studies**
- **County-owned corridor(s)**
- **Engaged public**
- **Leadership from elected officials**





# History of Ulster County's Trails Advisory Committee

- 1991: Wallkill Valley Rail Trail ("17<sup>th</sup> RT in NYS)**
- 1997: Hudson Valley Rail Trail (fiber-optic route!)**
- 2005: U&D Corridor – Rails + Trails Feasibility Study**
- 2007-2009: Walkway Over the Hudson**
- 2007: UC Non-Motorized Transportation Study**
- 2008: Resolution 224 – Established UCTAC**
- 2009: Marbletown O&W Rail Trail Committee**
- 2010: Kingston Point Rail Trail (Greenline)**
- 2014: Rail Trail Connector Link (Kingston-Hurley)**
- 2015: Kingston MidTown Linear Park**
- 2017: Empire State Trail**

# Options for Committee Structure

- **Board of Executive Branch**
- **Committee of Legislature (Leg. Members Only)**
- **Citizens' Committee**
  - **report to Executive**
  - **report to Legislature**
- **Free-standing (non-governmental)**
- **Mix of options**



# UCTAC Structure: 2008 - present

## -- **Citizens' Committee**

- Report to Legislature (2 committees)

## -- **Appointed Annually (now biannually)**

## -- **Categories of Membership**

- 1) Ulster County Legislature 3 members
- 2) Trails Community 2 members
- 3) Historical Community 1 member
- 4) Hiking & Biking Communities 2 member
- 5) Other NMT Communities 1 member
- 6) Local Government Officials 2 members
- 7) NYC DEP 1 member\*
- 8) NYS DOT 1 member\*

\*denotes non-voting members

## -- **Advisory Only**

## -- **Minimal Administrative Support ("No Cost")**

## -- **Monthly Meetings: Chair Sets Agenda**

# Accomplishments



County-wide “Complete Streets” policy

Support for emerging trails and groups

Sharing of “best practices”



Letters of support for grant applications

Education about and support for trails resolutions

Forum to study and debate issues

Increased visibility of trails and trail initiatives

# CATSKILL PARK

## and New York City Watersheds

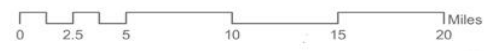
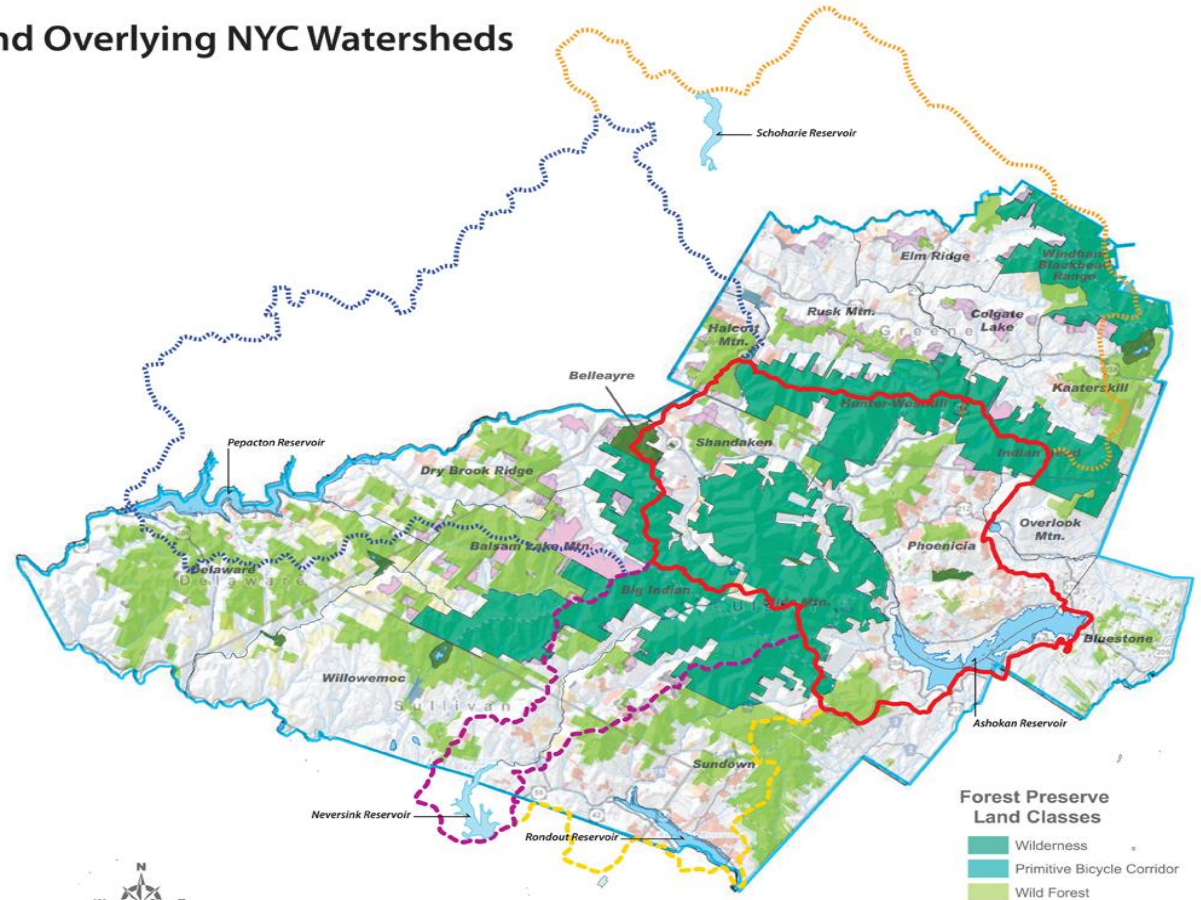
### The Catskill Park and Overlying NYC Watersheds

#### Legend

- County Boundary
- Town Boundary
- Surface Waters
- Portion of Private Lands at Elevations > 2,500 feet
- OSI Easements
- NYC DEP Easement Lands
- NYC DEP Fee Lands
- Forest Preserve
- Ashokan Watershed Boundary
- Delaware/Pepacton Watershed Boundary
- Rondout Watershed Boundary
- Schoharie Watershed Boundary
- Neversink Watershed Boundary
- CATSKILL PARK BOUNDARY

Note: This map has been compiled from different sources, among them, NYC DEP, NYS DEC, The Appalachian Mountain Club, The Ashokan Center, USGS, and others.

Areas within the Catskill Park not designated Wilderness, Primitive Bicycle Corridor, Wild Forest, or Intensive Use and not lying within one of the five NYC watersheds are potentially subject to hydrofracking. Areas outside the Park and outside the NYC & Syracuse watersheds are potentially subject to hydrofracking.

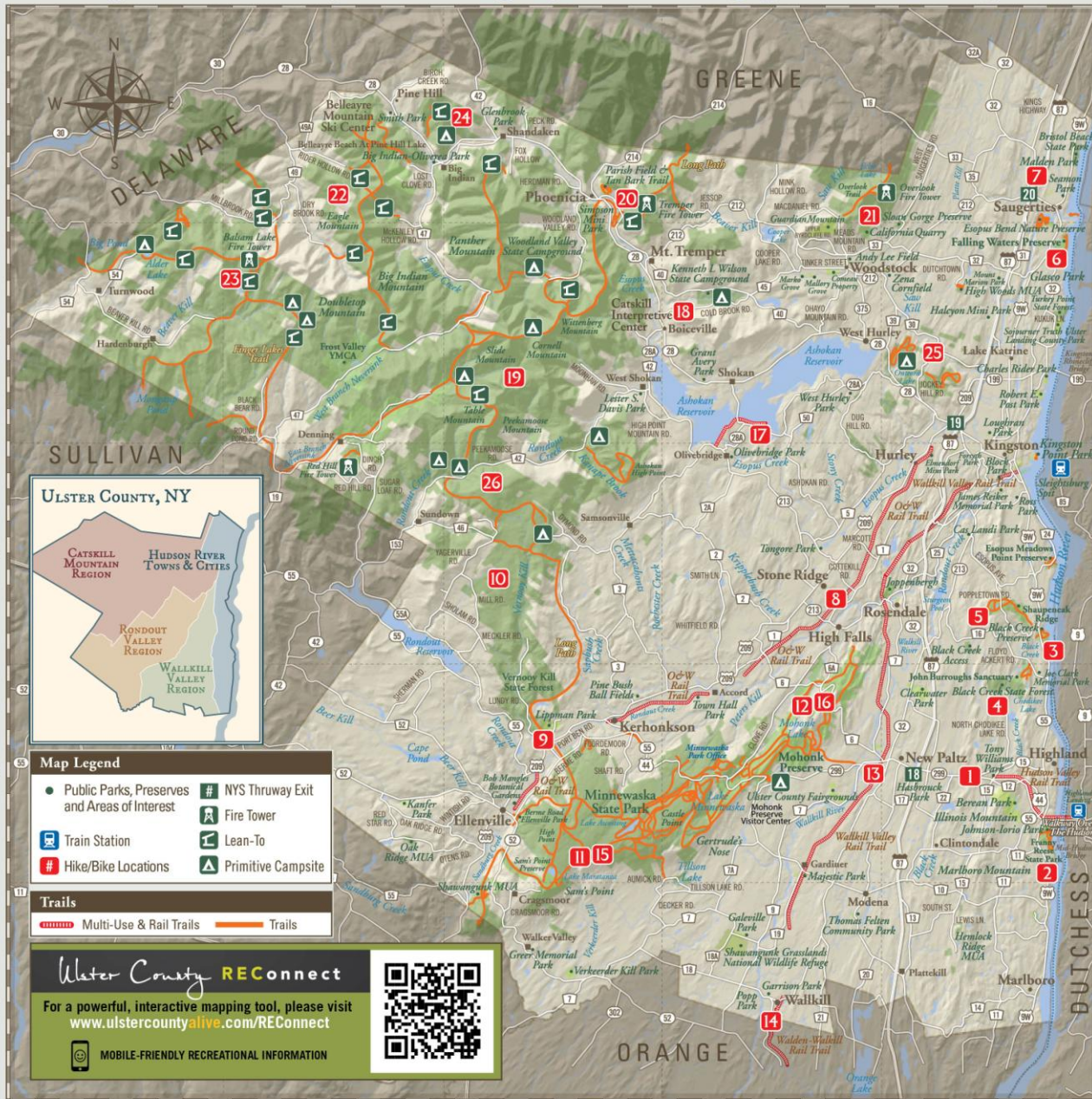


- #### Forest Preserve Land Classes
- Wilderness
  - Primitive Bicycle Corridor
  - Wild Forest
  - Intensive Use
  - Administrative

# Ulster County Hiking and Biking Trails

# Ulster County: Multi-purpose Trails

For online map:  
Search "REConnect"





# Looking Forward...



*“We have a unique opportunity to create ... world-class tourism destination[s], directly impact public health, and improve the overall quality of life in our region.”*

**- Ulster County Executive Michael P. Hein**